

BIMBRA 4x4



THAR 2020 CATALOG

 [bimb4x4](#)

 [bimb4x4](#)

 contact@bimb4.in

 8567856738



37B & 41B, HSIIDC Phase-5,
Gurugram, Haryana 122016,
India

Exteriors

Bimbra Hardtop



1. FRP Hardtop - Model OE

- FRP Dual Layer Hardtop has PU injected inside for insulation, hence making it noise proof, weatherproof and more durable than company Hardtop
- Line-X coated to resist scratches and increase durability
- Two piece design ensures that there is no water leakage & no rattling sound
- Bolt-on. Requires no alteration to the original body
- Comes with fixed toughened glasses on all sides
- Compatible with roof rails, roof carrier & sunroofs



Press the icon
to view more
pictures

Exteriors

Front Bumper



1.

Bumper - Model M

- Simple Bolt-on Installation. No alteration required
- Made of High Grade FRP making it lightweight yet sturdy
- Line-X Coated with Black Textured Finish to provide scratch resistance
- Tow Hooks & Shackles Included
- Metal Skid Plate included to protect the Radiator
- Winch plate fitting extra for winch installation



Press the icon
to view more
pictures

Exteriors

Front Bumper



2.

Bumper - Model W

- Simple Bolt-on Installation. No alteration required
- Made of High Grade FRP making it lightweight yet sturdy
- Line-X Coated with Black Textured Finish to provide scratch resistance
- Tow Hooks Included
- Metal Skid Plate included to protect the Radiator
- Winch plate fitting extra for winch installation



Press the icon
to view more
pictures

Exteriors

Front Bumper



3.

Bumper - Model R

- Simple Bolt-on Installation. No alteration required
- Made of High Grade FRP making it lightweight yet sturdy
- Line-X Coated with Black Textured Finish to provide scratch resistance
- Tow Hooks & Shackles Included
- Metal Skid Plate included to protect the Radiator
- Winch plate fitting extra for winch installation



Press the icon
to view more
pictures

Exteriors

Front Bumper



4.

Bumper - Model 0

- **Simple Bolt-on Installation. No alteration required**
- **Made of High Grade FRP making it lightweight yet sturdy**
- **Line-X Coated with Black Textured Finish to provide scratch resistance**
- **Tow Hooks & Shackles Included**
- **Metal Skid Plate included to protect the Radiator**
- **Winch plate fitting extra for winch installation**



**Press the icon
to view more
pictures**



1. Rear Bumper - Model RM

- Simple Bolt-on Installation. No alteration required
- Made of High Grade FRP making it lightweight yet sturdy
- Compatible with brake lights & number plate
- Line-X Coated with Black Textured Finish to provide scratch resistance
- Shackles Included
- Compatible with Tow Ball/Hook which is extra



Press the icon
to view more
pictures



2. Rear Bumper Model - RW

- Simple Bolt-on Installation. No alteration required
- Made of High Grade FRP making it lightweight yet sturdy
- Compatible with brake lights & number plate
- Line-X Coated with Black Textured Finish to provide scratch resistance
- Compatible with Tow Ball/Hook which is extra



Press the icon
to view more
pictures

Exteriors

Front Grill



1. Seven Slot (Matt Black)

2. Seven Slot (Body Color)

- Easy Installation which perfectly matches with light cutouts and mounting holes
- No drilling or alteration required
- Made of highest quality FRP with metal powder coated mesh
- Aggressive Design which allows ample airflow to and from your engine and radiator



**Press the icon
to view more
pictures**

Exteriors

Front Grill



3. Six Slot (Matt Black)

4. Six Slot (Body Color)

- Easy Installation which perfectly matches with light cutouts and mounting holes
- No drilling or alteration required
- Made of highest quality FRP with metal powder coated mesh
- Aggressive Design which allows ample airflow to and from your engine and radiator



Press this icon
to view more
pictures

Exteriors

Side Steps



1. Rock Sliders - Model G

- Provides protection to the vehicle body
- Built from durable, Heavy duty steel
- Bolt-On fitment
- One Piece Welded Design For increased strength & protection
- Textured black powder coat finish



Press the icon
to view more
pictures

Exteriors

Side Steps



2. Rock Sliders - Model T

- Provides protection to the vehicle body
- Built from durable, Heavy duty steel
- Bolt-On fitment
- One Piece Welded Design For increased strength & protection
- Textured black powder coat finish



Press the icon
to view more
pictures

Exteriors

Accessories



1. Stepney Cover Lock

- Secures the Stepney and makes it lockable
- Bolt-on. No drilling or alteration required
- Made of highest quality FRP with metal pipes
- Line-X coated to provide strength and scratch resistance
- Protects the Alloy & the Tyre
- Compatible with tyre size upto 285 60 R18



Press this icon
to view more
pictures

Exteriors

Accessories



2. Door Cladding

- Protects the sides of the vehicle
- Pasted. No drilling or alteration required
- Made of highest quality FRP
- Line-X coated to provide strength and scratch resistance
- Dual painted to match vehicle color



Press this icon
to view more
pictures

Interiors

Seat Modifications



1. Rear Seat Slider



2. Rear Seat Slider with Fold

- Rear seat slides front and back to create more storage space
- Bolt-on. No additional holes or alteration required
- Metal structure covered in carpet with pair of seat sliders for movement
- Option of with or without hinges to make front fold possible



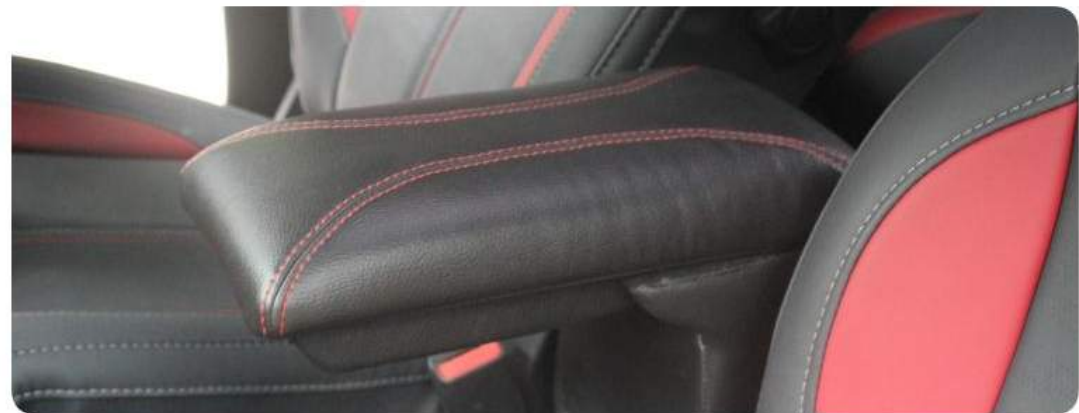
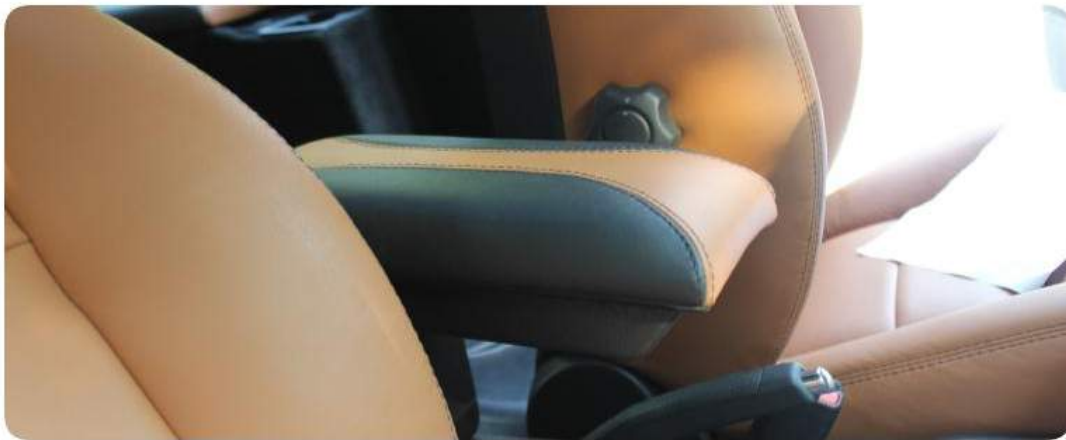
1. Front Seat Organizer

2. Rear Seat Organizer

- **Front Storage (Each Side):** 2 x Bottle Pockets, 1 x Pocket with Lid, 1 x mesh pocket & 1 x large pocket.
- **Rear Storage (Each Side):** 2 x tool pockets with lids, 1 x mesh pocket, 1 x large pocket.
- **Easy to install and disassemble.**
- **Easy to clean, made of heavy quality Canvas.**

Interiors

Arm Rest



1. Front Arm Rest

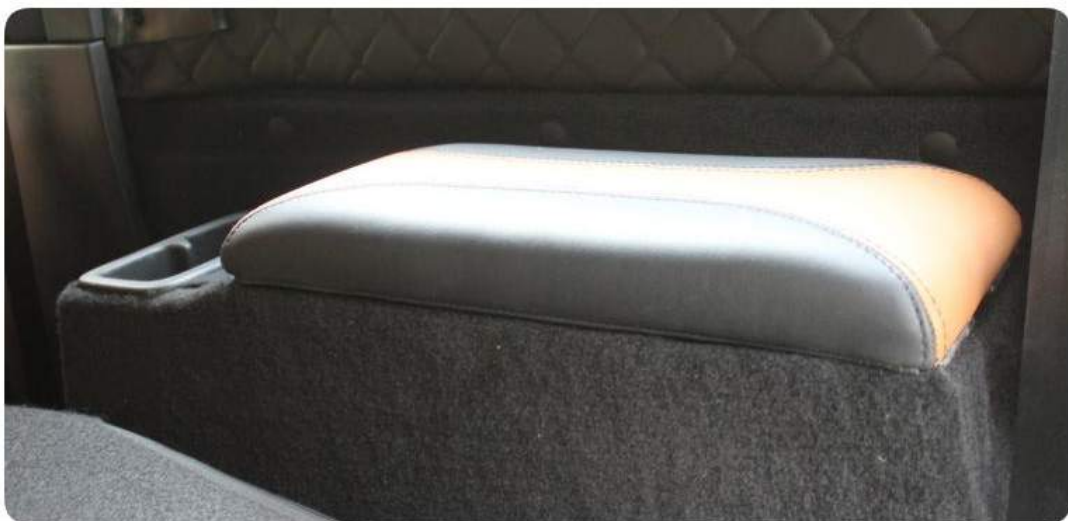
- Bolts directly into existing mounting screws. No need to remove the OE console
- Dense foam padding cover for comfort and a great look in the vehicle
- Neatly integrated underneath is a concealed storage compartment
- No loss of space as the handbrake and the cup holders do not lose their functionality
- Option to install light switches into the arm rest



Press this icon
to view more
pictures

Interiors

Arm Rest



2. Rear Arm Rest

- Installation does not require additional holes
- Covers the empty area over the wheel well
- Wide arm rests with storage space underneath where you can easily keep belongings
- Cupholders are provided on both the sides with dual USB charge points on each side.



Press the icon
to view more
pictures

Interiors

Roof



1. Hatch Sunroof

- Matt black powder coated aluminium frame
- Dark smoke coloured acrylic
- Lid can be held open at any angle up to 180 degree
- Openable size: 750 x 400mm
- Compatible with both FRP and Original Hardtop



Press the icon
to view more
pictures

Interiors

Roof



2.

Grab Handles

- The grab handle bar is made of solid steel with black powder coated finish surface which is durable and strong
- Non-slip rubber handles protect the safety of your passengers while driving on bumpy roads and for getting in & out
- Requires drilling in A-Pillar for support



Press this icon to
view more
pictures



1. Leg Padding

- Provide cushioning for the leg and relief from the fatigue from driving.
- Pasted on the dashboard with 3M tape. No alteration required in the vehicles.
- Made with high quality leatherite/leather. Easy to clean.



Press this icon to view more pictures



2. Dead Pedal

- Bolt on with basic hand tools, perfect hole design for direct installation without drilling or cutting
- Non-slip design that reduces leg fatigue in the automatic variant
- Made of durable aluminium with a textured powder coating.



Press the icon to view more pictures

Interiors

Accessories



5. Bonnet Shockers

- **Bolt-on. No alteration on drilling required**
- **Includes fittings & two hydraulic shocks**
- **Bonnet opens on its own once the locks are released**
- **Bonnet remains opens without need of any support**

Lights

Lightforce



1. Lance 140



2. Striker 170



3. Blitz 240



4. Striker LED



5. Venom LED



6. Genesis LED



7. Rok9 LED



8. Rok20 LED



9. Rok40 LED



10. HTX2 Hybrid



11. 170 Filters



12. 240 Filters

Lights

Misc.



1. Blade LED Headlight



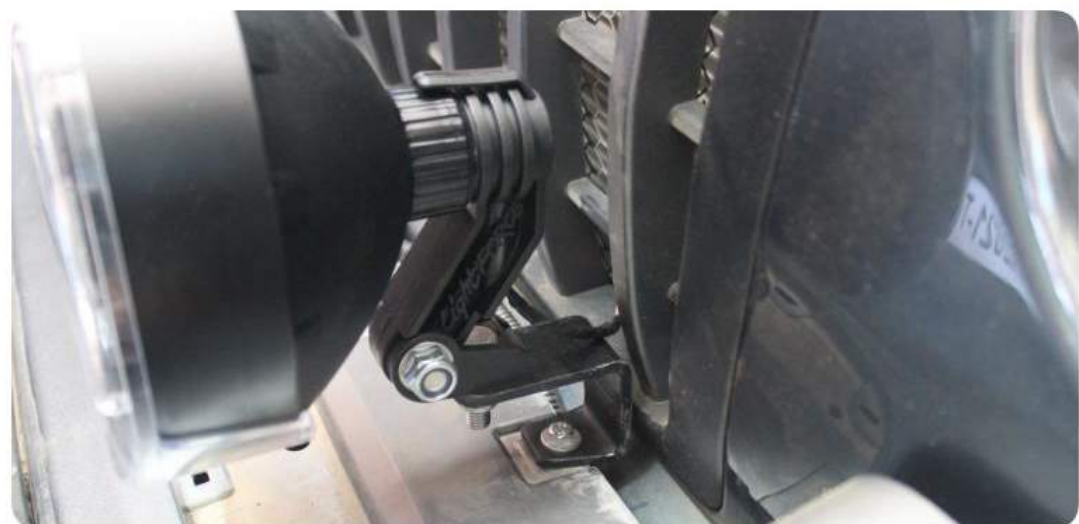
2. Blade Halo LED Headlight



3. Windscreen Brackets (Pair)



4. Bumper lights Mounting Brackets (Pair)



Performance & Suspension

Performance



1. Diesel Functional Snorkel

2. Dummy Snorkel

- Raises air intake to prevent water ingestion, while allowing vehicles to utilize clean air when driving in dusty conditions.
- Vehicle specific design and factory airbox adaption fit
- Manufactured using durable FRP
- Line-X coated to resist impact damage



**Press the icon
to view more
pictures**

Performance & Suspension

Performance



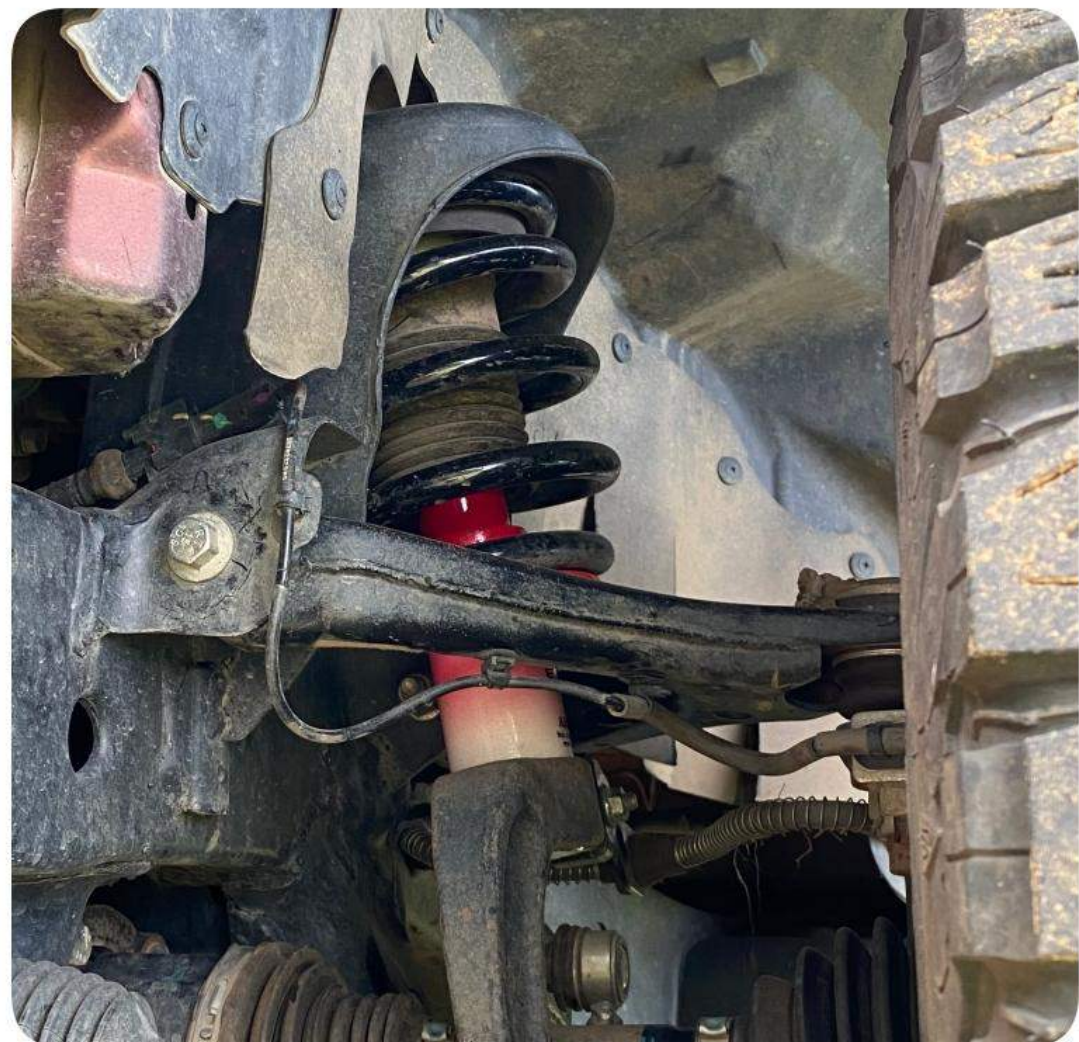
1.

Wheel Spacers 30mm

2.

Wheel Spacers 50mm

- **Helps fit tyres & alloys which otherwise would rub against the body**
- **Gives your vehicle a wider stance for more aggressive looks**
- **Made from a special aluminum alloy which is non corrosive**
- **Each wheel spacer is machined to obtain an extremely flat surface & fit**



1. ARC Suspension Kit

- Oil filled double acting shock absorber for better reliability
- Tuned to work with Indian road conditions with Improved handling and stability
- Eliminate bounciness and body roll
- Improved off-road drivability
- Product tested for 1.5 lakh cycles at endurance test equivalent to 1.5 lakh kilometres.
- Vibration level of OEM shock absorber is 0.95hz but reduces to .05hz as per tested at ARC



1. ComeUp Gio 10



2. ComeUp Gio 10 (Synthetic)



3. ComeUp Gio 12



4. ComeUp Gio 12 (Synthetic)



5. Winch Plate

Off-Road and Expedition

Recovery



1. Tow Hook

2. Heavy Duty Tow Hook

- Mounted to the chassis & Rated to 5000 pounds
- Tow ball can be removed when not required.
- Corrosion Resistant ball hitch is protected with a durable powder-coat finish, and the trailer ball has a chrome plating
- Option to choose from both regular tow hook which is mounted on 8 bolts and heavy duty tow hook which is mounted on 14 bolts



Press this icon to view more pictures

Off-Road and Expedition

Underbody Protection

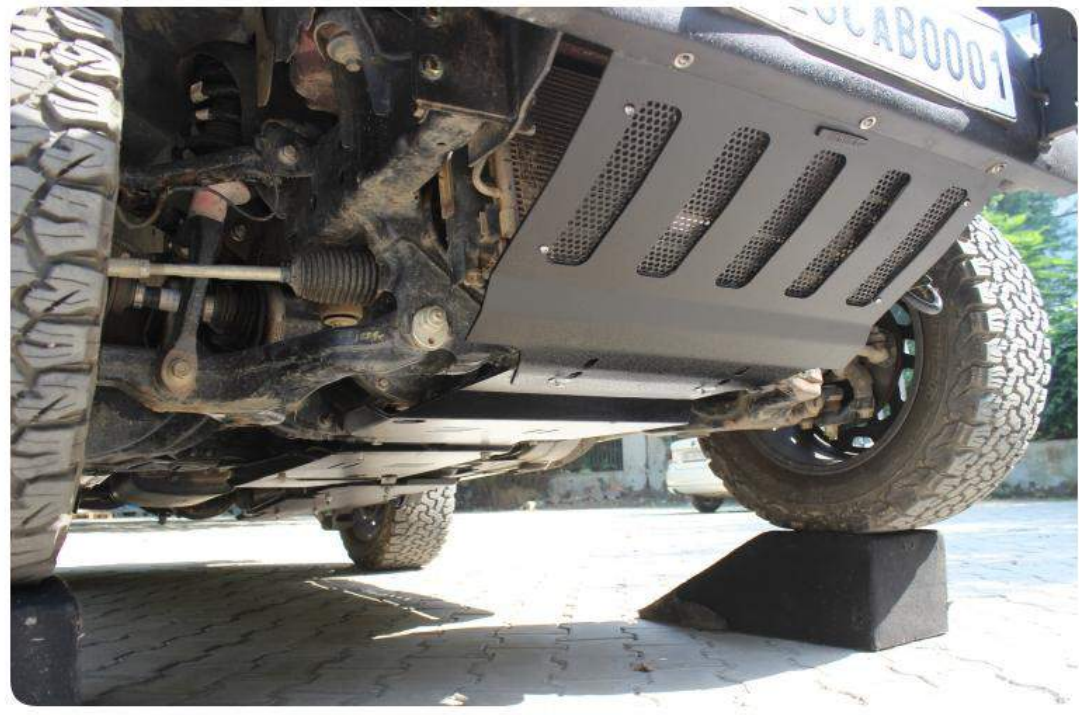
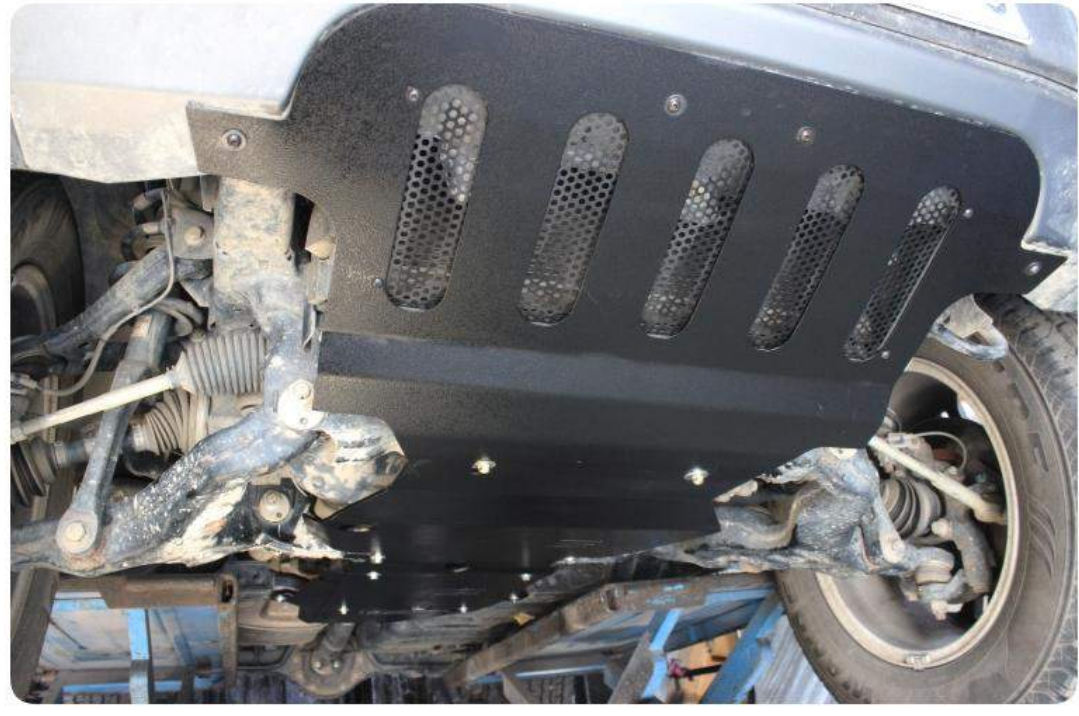


1. Skid Plate Steel

2. Skid Plate Aluminium



3. Fuel Tank Protection Aluminium



4. Underbody Protection Steel

5. Underbody Protection Aluminium



1.

Rear Tray XL

- **Constructed from solid Metal and powder coated for protection**
- **Convenient table that folds down from the tailgate**
- **Fold up design makes storage convenient**
- **Can hold up to 100 lbs, Extra holes are required for fitment**
- **Bolts to mounting points, Rattle free design**



2.

Fuel Lid Cover

- **Built from durable, Heavy duty steel**
- **Pasted to the body with 3M Double Tape**
- **One Piece Design**
- **Textured black powder coat finish**

Off-Road and Expedition

Luggage



1. Roof Carrier - Model AR

- Bolt-on Installation
- No modifications are required for installation
- Compatible with all models of Mahindra Thar
- Aerodynamically Designed
- Load Capacity : 75kg



Press this icon
to view more
pictures

Off-Road and Expedition

Luggage



2. Roof Carrier Model - XR

- Bolt-on Installation
- No modifications are required for installation
- Compatible with Original & FRP Hardtop model of Thar
- Aerodynamically Designed
- Load Capacity : 100kg



Press this icon
to view more
pictures



3.

Rear Carrier

- Bolt-on Installation
- No modifications are required for installation
- Compatible only with Bimbra Heavy Tow Hook
- Load Capacity : 150kg
- Easy to install & remove



Press this icon
to view more
pictures